



GUILDFORD
CATHEDRAL

KNIFE ANGEL

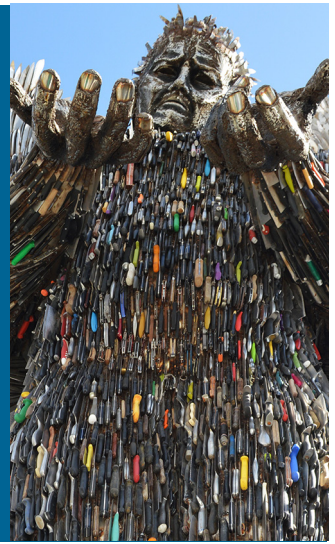
National Monument **Against Violence and Aggression**

Help bring it to Guildford
for the month of **March 2023**



Getting approval to host Knife Angel is a real privilege. It is a huge operation from transporting the sculpture, lifting and securing it in place, and the security needed. Organisations and Charities across Surrey are working together to provide 30 days of engagement. Whether your organisation is interested in donating funds to support the visit or would prefer to offer *In Kind* sponsorship, we would love to hear from you.

In the following pages, we have outlined the levels of sponsorship available, and ways in which your support will be recognised for help in **Keeping Surrey Safe**.



Temporarily installed at Guildford Cathedral, Knife Angel will inspire conversations, provoke discussions, aid reflections and support education. It endeavours to work to make all communities places without aggression or violence.

There will be a wide range of events to accompany Knife Angel's visit to the county.

HOW YOU CAN HELP

As you can imagine, there are many costs associated with bringing Knife Angel to Guildford. In the current climate, many businesses and organisations may find it difficult to offer cash donations, however, offers of help to provide support, goods, and services in lieu would be welcome.

Volunteers are needed for various roles to support Knife Angel's visit to Guildford. Please let us know if any of your employees would like to get involved.

However you support Knife Angel's visit, it will enable positive change in our communities.

OFFERS OF SUPPORT MIGHT INCLUDE:

- Sponsorship of talks and lectures for all ages
- Lighting for Knife Angel
- Construction materials
- Printing and/or signage sponsorship
- Sponsorship of launch and closing event
- Refreshments at Launch Event
- Provide transport for school children to see Knife Angel
- Marketing Materials
- Security fencing
- Transport of Knife Angel

Please do spread the word amongst your colleagues, friends, and associates. If any of them are interested in getting involved as a sponsor, volunteer, or in any other way, we would be delighted to hear from them.

In return for your investment, we would be happy to offer the following benefits:

SUPPORTING

- Sponsorship is for companies who donate from £100-£500 (or in-kind equivalent)
- Logo on the Guildford Cathedral, Knife Angel website.
- Recognition on Knife Angel Guildford and Guildford Cathedral social media channels.
- One ticket, invitation only, Launch Event to be held on the evening of 1 March 2023.
- Inclusion in list of supporters on the on-site acknowledgement board.

MAJOR

- Sponsorship is for companies who donate from £501-£1,000 (or in-kind equivalent)
- All the benefits listed under the **SUPPORTING** Sponsorship PLUS;
- Invitation for two people to the Launch event to be held on the evening of 1 March 2023.
- Small Logo and thank you on the on-site acknowledgement board.

PRINCIPAL

- Sponsorship is for Companies who donate from £1001-£5,000 (or in-kind equivalent)
- All the benefits listed under the **SUPPORTING** Sponsorship PLUS;
- Invitation for four people to the Launch event to be held on the evening of 1 March 2023.
- Group Photograph taken by our official photographer with the Knife Angel including five 10x8 prints and a HiResolution digital copy for publicity use.
- Large logo and thank you on the on-site acknowledgement board.

YOUR SPONSORSHIP WILL HELP:

TALKS AND LECTURES

We will be providing eight talks and lectures across several venues throughout Guildford.

£350 would pay for a talk or lecture.

£2,800 would cover all eight talks taking place throughout March.

£2,000 would cover the cost of printing and marketing materials.

£2000 would cover an entire day of talks for school children by Dean Coady from Urban Solutions.

TRANSPORT

To bring School children to talks or to visit Knife Angel. Could you provide minibus transport and a driver for the day as an in-kind gift?

£500 enables coach hire for a school to engage with Knife Angel.

£250 cover the cost of a minibus and driver.

SECURITY

By far the biggest cost is overnight and day time security. £11,200 pays for security for the duration of the visit.

£340 pays for one day's security. We need volunteers, charities, and volunteer organisation to help us with day time cover and engagement.

TRANSPORT OF KNIFE ANGEL

Knife Angel is about Community Partnerships and working together. Each host venue pays it forward for the transport of the sculpture. Are you a transport company that could carry the Knife Angel to its next destination of Bradford?

HIGHLIGHT YOUR WORK

Does your charity or organisation provide support for those affected by domestic violence, violence against women or are you a youth charity? Would you like the opportunity to highlight your work?

Join us and other local businesses and organisations already standing together. Offer your services or sponsorship and in this effort to cancel violent crimes in Surrey. Be part of Knife Angel's visit to Surrey and its legacy beyond the month of March.

**You can help
to make a difference!**



SUPPORT



PLEASE CONTACT

Nicola Pratt
Head of Development
headofdevelopment@guildford-cathedral.org
01438 547 884

KNIFE ANGEL VISIT

HOSTS AND SUPPORTERS:

Guildford Cathedral • Guildford Borough Council •
Surrey Police • The Surrey Lieutenancy •
The High Sheriff of Surrey • Christ's College, Guildford, •
Your Sanctuary • Stop Hate UK • Regional Safety Group

Knife Angel images courtesy of the British Ironwork Centre.

Artwork by Newbold PR&Media and Martin Gwilliams

